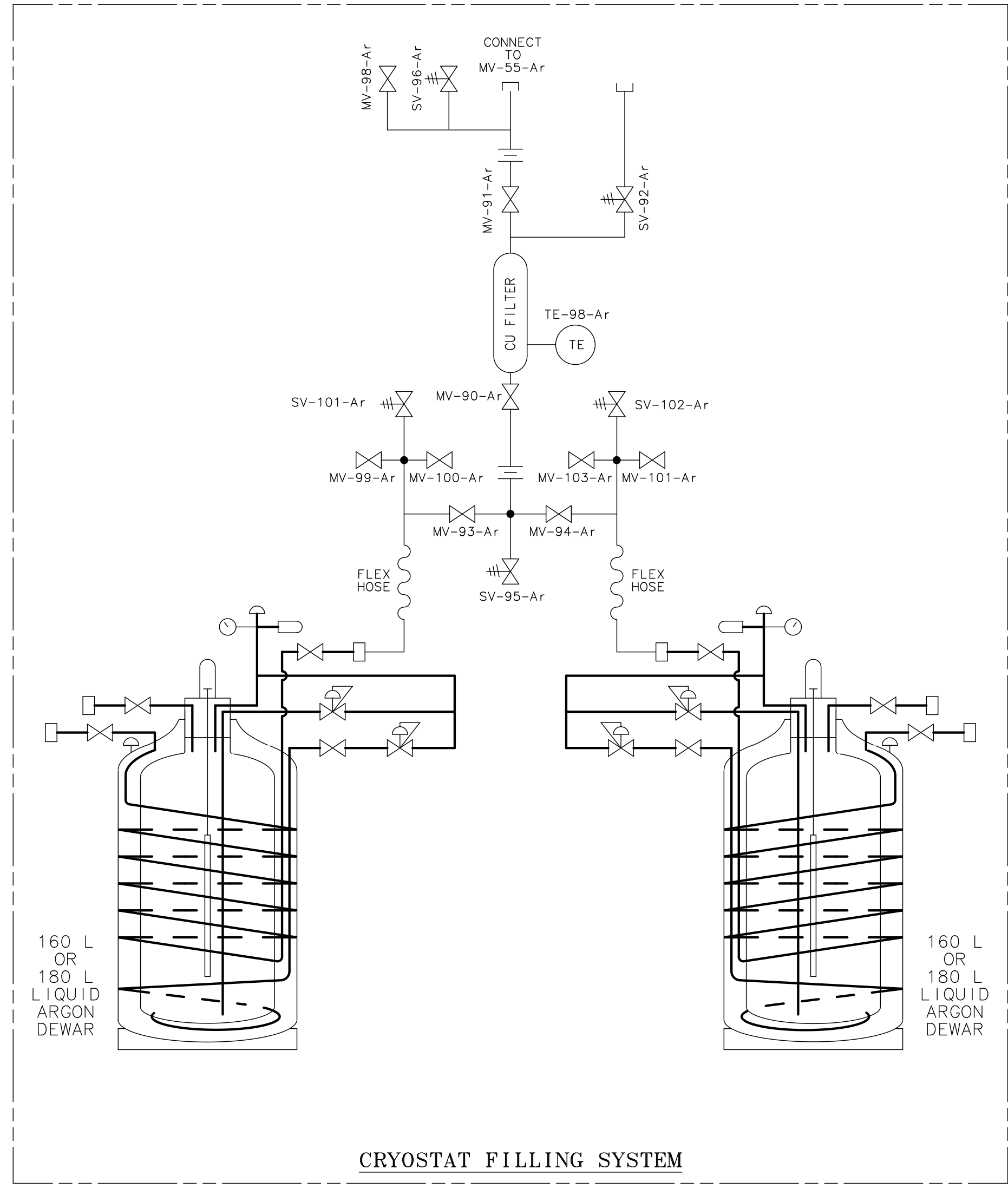
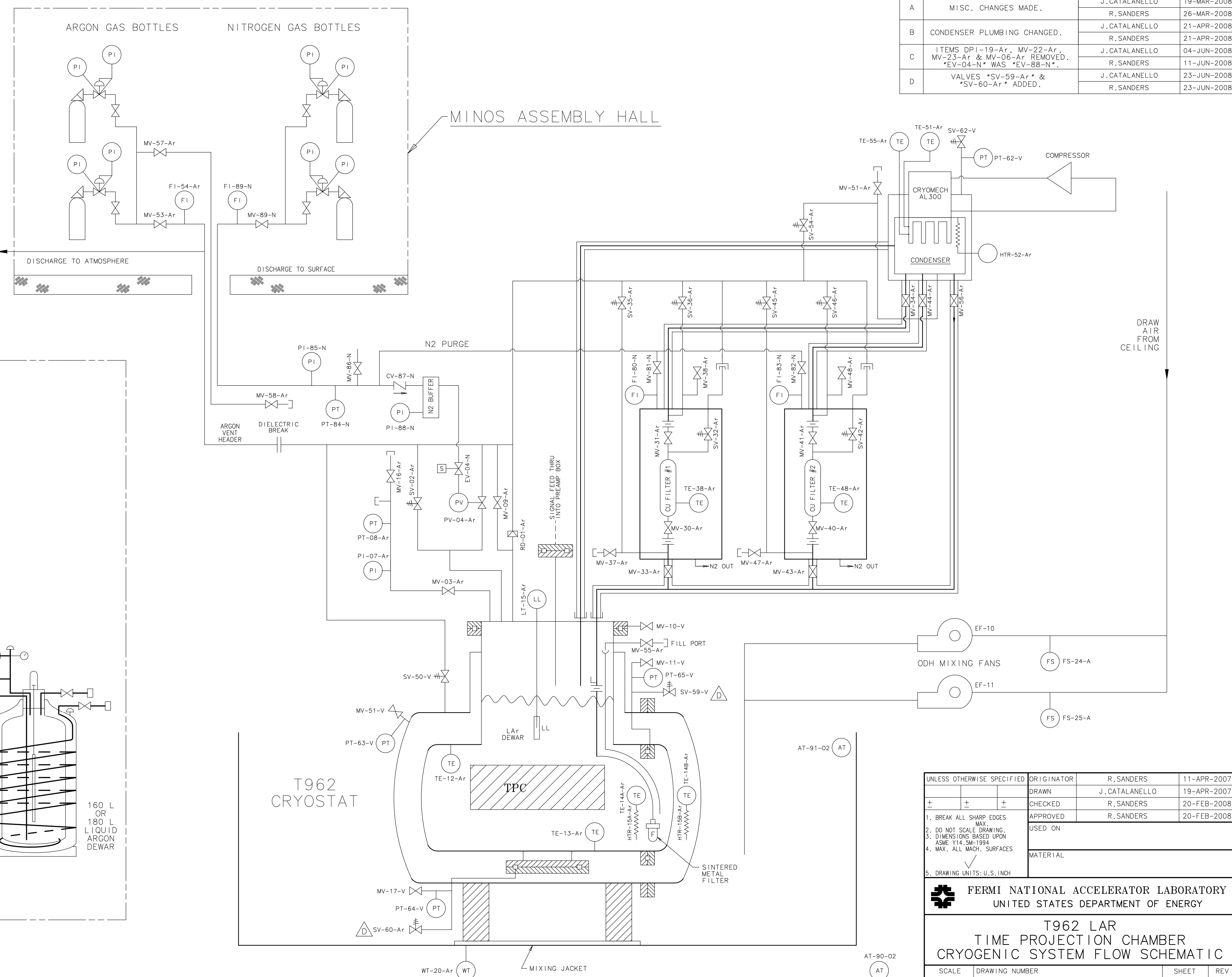


E	MISC. CHANGES MADE.	J. CATALANELLO	30-JAN-2009	REV	DESCRIPTION	DRAWN	DATE
		R. SANDERS	09-FEB-2009	A	MISC. CHANGES MADE.	J. CATALANELLO	19-MAR-2008
				B	CONDENSER PLUMBING CHANGED.	R. SANDERS	26-MAR-2008
				C	ITEMS DPI-19-Ar, MV-22-Ar, MV-23-Ar & MV-06-Ar REMOVED. *EV-04-N* WAS *EV-88-N*.	J. CATALANELLO	21-APR-2008
						R. SANDERS	21-APR-2008
				D	VALVES *SV-59-Ar* & *SV-60-Ar* ADDED.	J. CATALANELLO	04-JUN-2008
						R. SANDERS	11-JUN-2008
						J. CATALANELLO	23-JUN-2008
						R. SANDERS	23-JUN-2008



UNLESS OTHERWISE SPECIFIED			
ORIGINATOR	R. SANDERS	11-APR-2007	
DRAWN	J. CATALANELLO	19-APR-2007	
CHECKED	R. SANDERS	20-FEB-2008	
APPROVED	R. SANDERS	20-FEB-2008	
USED ON			
MATERIAL			

**FERMI NATIONAL ACCELERATOR LABORATORY**  
 UNITED STATES DEPARTMENT OF ENERGY

**T962 LAR**  
**TIME PROJECTION CHAMBER**  
**CRYOGENIC SYSTEM FLOW SCHEMATIC**

SCALE	DRAWING NUMBER	SHEET	REV
NONE	9219.000-MD-444703	1 OF 1	E

CREATED WITH : Ideas12NXSeries    GROUP: PPD/MECHANICAL DEPARTMENT