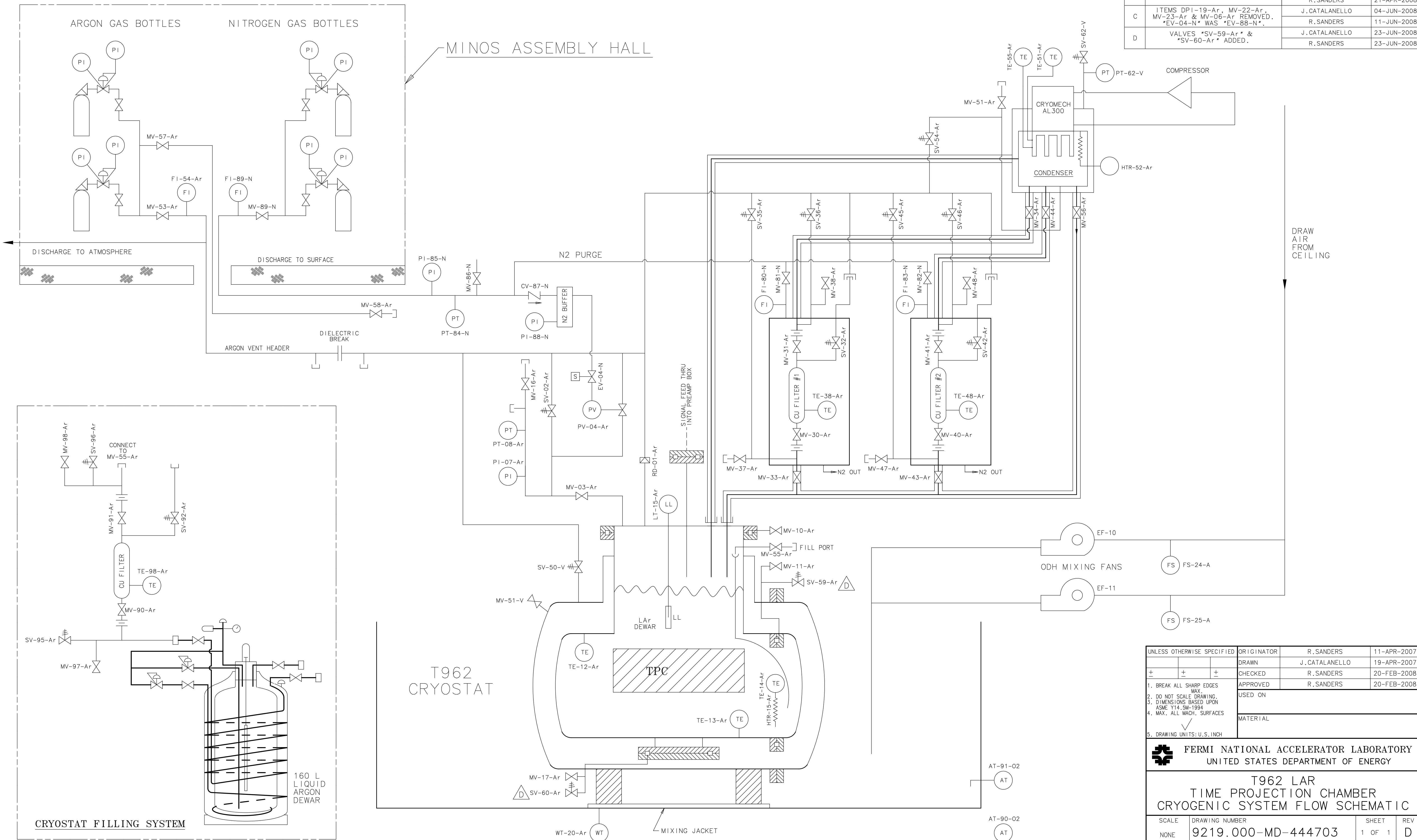


REV	DESCRIPTION	DRAWN	DATE
		APPROVED	DATE
A	MISC. CHANGES MADE.	J. CATALANELLO	19-MAR-2008
B	CONDENSER PLUMBING CHANGED.	R. SANDERS	26-MAR-2008
C	ITEMS DPI-19-Ar, MV-22-Ar, MV-23-Ar & MV-06-Ar REMOVED. *EV-04-N* WAS *EV-88-N*.	J. CATALANELLO	04-JUN-2008
D	VALVES *SV-59-Ar* & *SV-60-Ar* ADDED.	R. SANDERS	11-JUN-2008
		J. CATALANELLO	23-JUN-2008
		R. SANDERS	23-JUN-2008



UNLESS OTHERWISE SPECIFIED			
ORIGINATOR	R. SANDERS	11-APR-2007	
DRAWN	J. CATALANELLO	19-APR-2007	
CHECKED	R. SANDERS	20-FEB-2008	
APPROVED	R. SANDERS	20-FEB-2008	

- BREAK ALL SHARP EDGES MAX.
- DO NOT SCALE DRAWING.
- DIMENSIONS BASED UPON ASME Y14.5M-1994
- MAX. ALL MACH. SURFACES
- DRAWING UNITS: U.S. INCH

FERMI NATIONAL ACCELERATOR LABORATORY
UNITED STATES DEPARTMENT OF ENERGY

T962 LAR TIME PROJECTION CHAMBER CRYOGENIC SYSTEM FLOW SCHEMATIC

SCALE	DRAWING NUMBER	SHEET	REV
NONE	9219.000-MD-444703	1 OF 1	D

CREATED WITH : Ideas12NXSeries GROUP: PPD/MECHANICAL DEPARTMENT